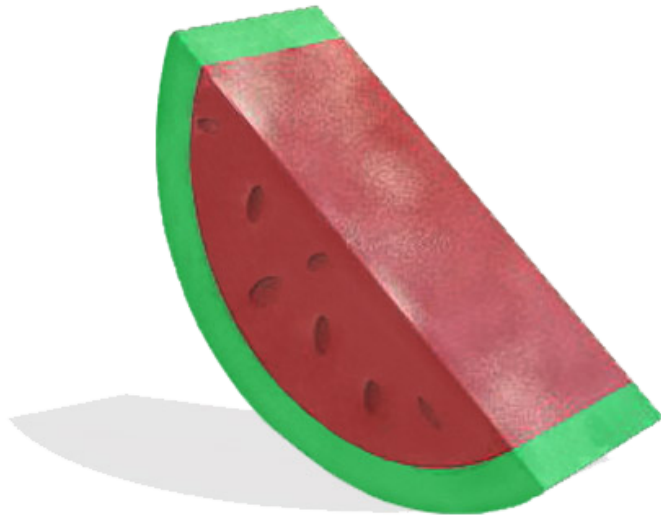


Watermelon Animal Cracker



We knew fruit was healthy but who knew it could be so fun!? Our Watermelon Animal Cracker's eye-popping realistic colors will draw the eyes of infants, the hands of toddlers and full on body contact of younger children as they scramble to climb, balance and slide its sleek build. It can be used to decorate a botanical garden, provide a distraction, or populate a garden or healthy eating themed exhibit. This little Watermelon would make for a great water feature at splash parks.mpanion.

The 4 Kids was born out of a desire to create high quality, one-of-a-kind park shelters and play environments that effectively appeal to children's natural curiosity and imagination.

All of our products are custom designed to work perfectly with your unique playground. Let us know how we can meet your specific needs by contacting our knowledgeable design specialists, today.

Contact Us

Ordering from The 4 Kids is easy, initial consultation & quote is free.
We can also provide you with design ideas and conceptual drawings.
We want your whole experience with The 4 Kids to be smooth & rewarding.

4400 Oneal St. Greenville, TX 75401

903.454.9237

info@the4kids.com

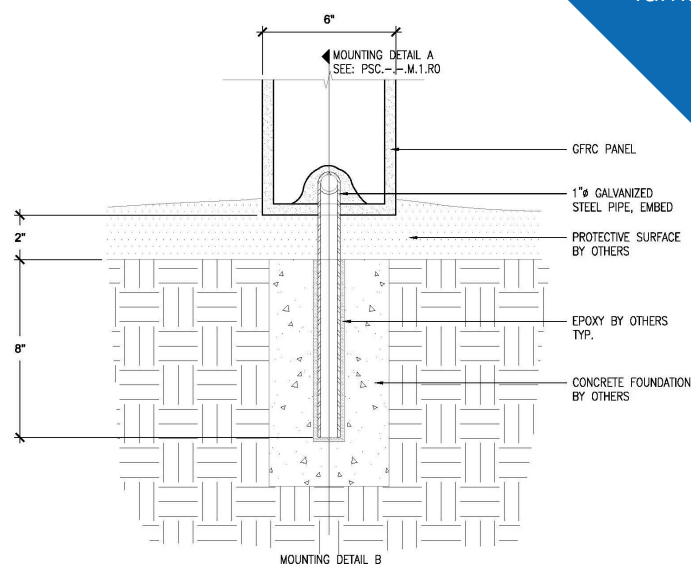
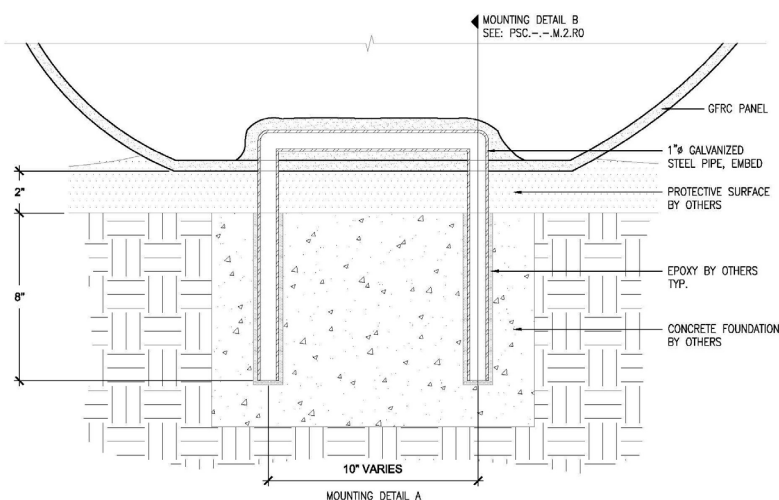
www.the4kids.com

Why Use Us?

Let our team of experienced engineers and artists make your playground the destination for fun! We can create an exciting space where children's imaginations can run wild. A playscape where parents can feel secure and create lasting memories with their whole family.

Key Features

- Available in finishes included realistic, stone and concrete
- Good for ages 6 months to 12 years
- Safe for anyone to touch and climb
- Materials are weather resistant and easy to clean
- Call for a free quote



Specifications

Age Range:

2 - 5 years
5 - 12 years

Dimensions:

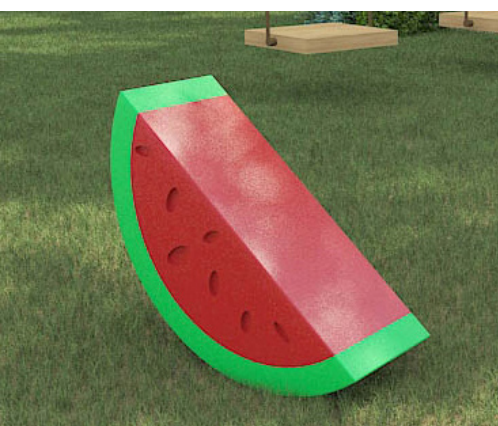
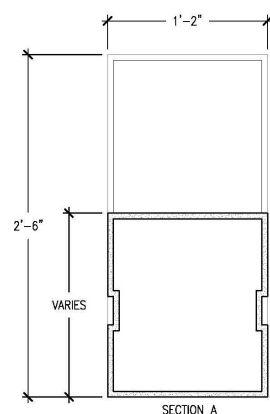
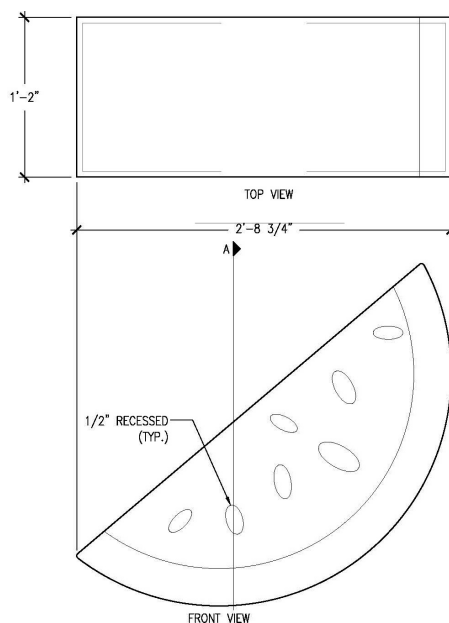
32.75"L x 14"W x 30"H

Use Zone:

14'8.75"L x 13'2"W

Mounting Options:

See Typical
Installation Details



Contact Us

Ordering from The 4 Kids is easy, initial consultation & quote is free. We can also provide you with design ideas and conceptual drawings. We want your whole experience with The 4 Kids to be smooth & rewarding.

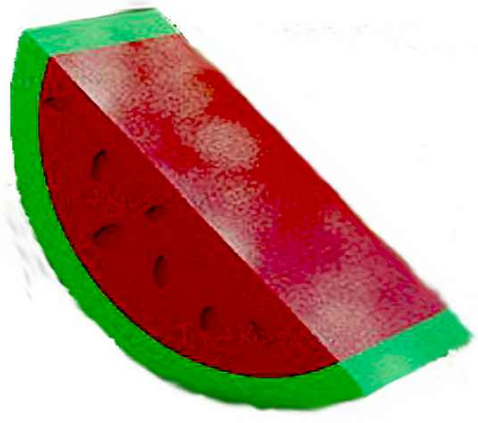
4400 Oneal St. Greenville, TX 75401

903.454.9237

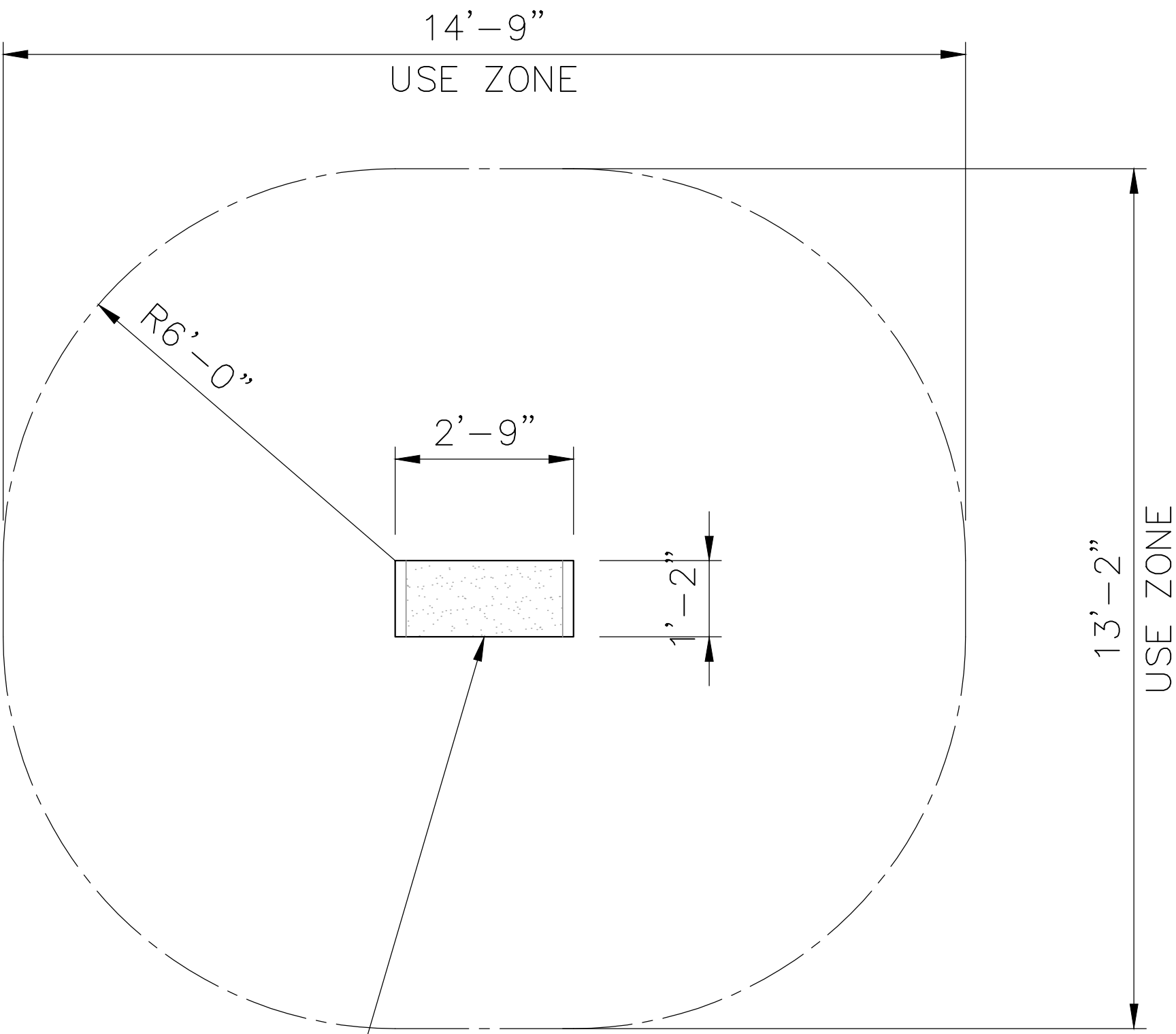
info@the4kids.com

www.the4kids.com

© 2014 The 4 Kids Inc. All rights reserved.



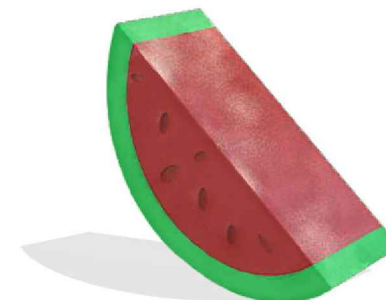
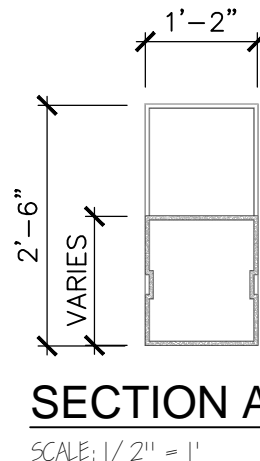
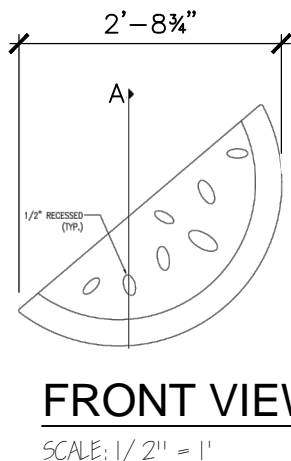
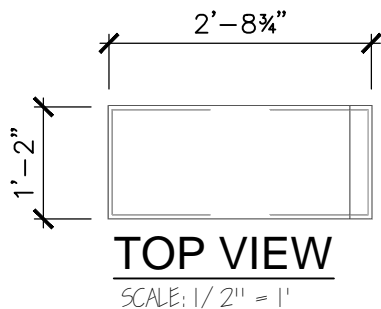
WATERMELON ANIMAL CRACKER
32.75" X 14" X 30"



WATERMELON
ANIMAL CRACKER

TOP VIEW

SCALE: 1/2" = 1'-0"



PRODUCT VIEW
SCALE: 1/2" = 1'

ALL RIGHTS RESERVED. THIS DRAWING IS PROPERTY OF THE 4 KIDS INC. AND MAY BE USED ONLY WHEN UTILIZING THE 4 KIDS INC. GENERAL TERMS AND CONDITIONS APPLY AND ARE INCORPORATED HERE IN BY REFERENCE. THIS DETAIL MAY NOT APPLY TO ALL CONDITIONS AND CONSTRUCTION SITUATIONS.

PROJECT: TITLE: WATERMELON ANIMAL CRACKER



CUSTOM THEMED PLAYGROUNDS

400 ONEAL STREET, GREENVILLE, TX 75101 PHONE 903.454.9237 FAX 903.454.3642

ITEM ID: ANI109

MOLD

APX. TTL. WEIGHT

- LBS. [- KG]

MATERIAL:

TOTAL # OF ITEM:

TOTAL SQ. FEET: - [- sqm.]

REFERENCES:

COLOR & PER APPROVED SAMPLE
TEXTURE: PER APPROVED SAMPLE

TYPE DWG: FABRICATION

DRAWN BY:

DATE:

SCALE: AS NOTED

SHEET:

DWG. SHEET: